

IA 2-1 A (300 l)		IA 2-1 B (300 l)		IA 2-1 C (400 l)		IA 2-1 D (400 l)	
Dimensions	Φ 1.62 m	Dimensions	Φ 1.62 m	Dimensions	Φ 1.62 m	Dimensions	Φ 1.62 m
T-T	1.9 m	T-T	1.9 m	T-T	2 m	T-T	2 m
Design / Opp. P	1300	Design / Opp. P	1300	Design / Opp. P	1300	Design / Opp. P	1300
Design / Opp. T	150	Design / Opp. T	150	Design / Opp. T	150	Design / Opp. T	150
M.O.C.	CS	M.O.C.	CS	M.O.C.	CS	M.O.C.	CS

- NOTES:
- Periodic drainage (into a pan) using an adhoc diaphragm pump to storage
  - SP = Sampling Point
  - Investigate internal fibreglassing of IA vessels
  - Centre Pivot on vessels for Cleaning
  - Ad Sight glasses to adsorber outlers

LEGEND

CODE	DESCRIPTION
WCO	Waste Cooking Oil
ECO	Esterified Cooking Oil
RBD	Raw Biodiesel
PBD	Polished Biodiesel
BDP	Biodiesel Product
MHO	Methanol
CAT	Methanol Catalyst
ADD	Biodiesel Additives
PF	Process Fluid (Mixture)
EF1	Effluent 1
EF2	Effluent 2
RG	Raw Glycerol
CW	Cold Water
HW	Hot Water
UW	Utility Water
PV	Process Vapour
CA	Compressed Air

			-
04	2016/06/29	Mid-Construction	-
03	2016/02/16	Pre-Construction	-
02	2015/12/14	Post-HAZOP	-
01	2015/12/09	Pre-HAZOP	-
00	2015/11/24	First Draft	-
REV	DATE	REVISION DESCRIPTION	APP

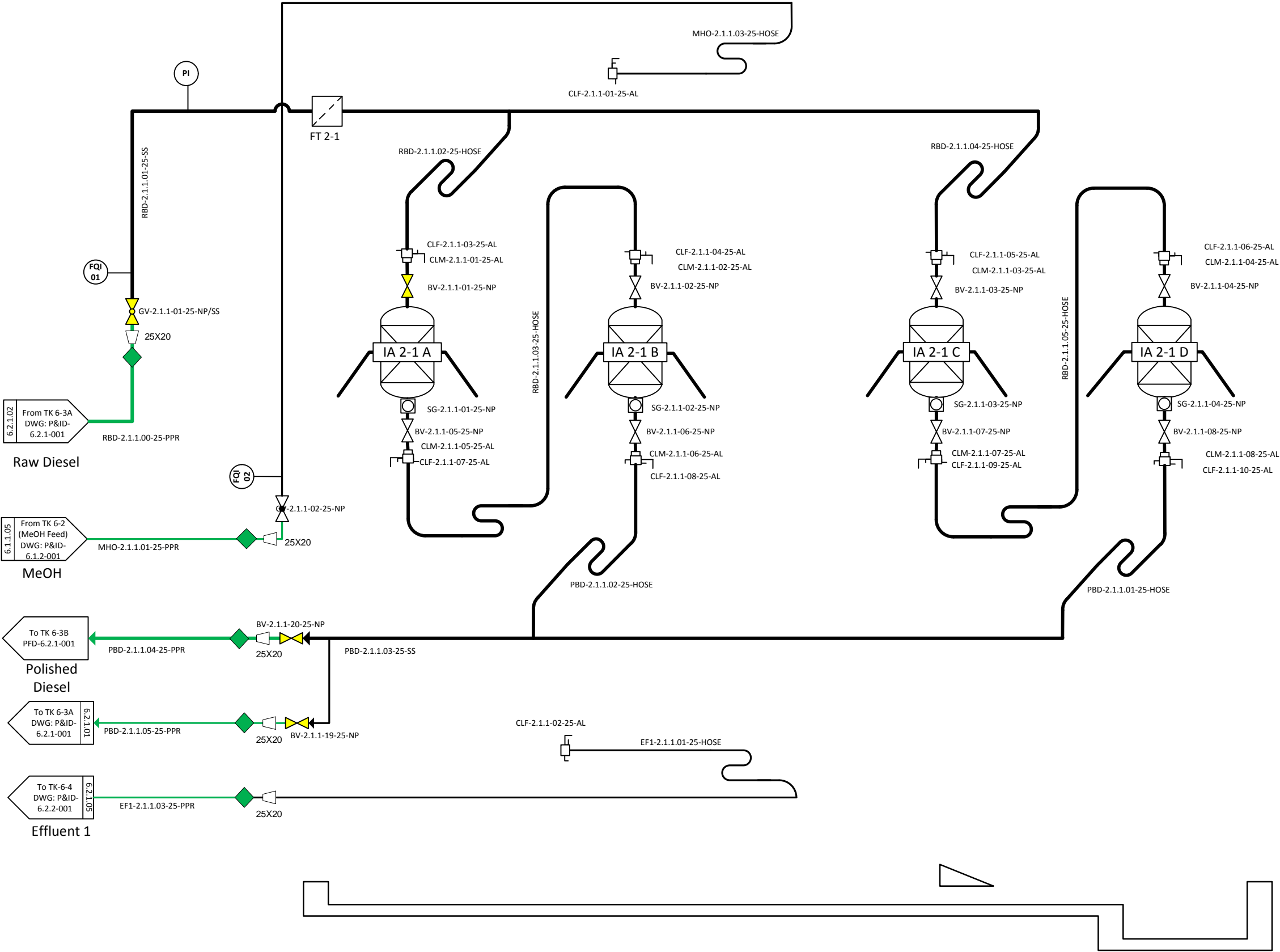
CLIENT:



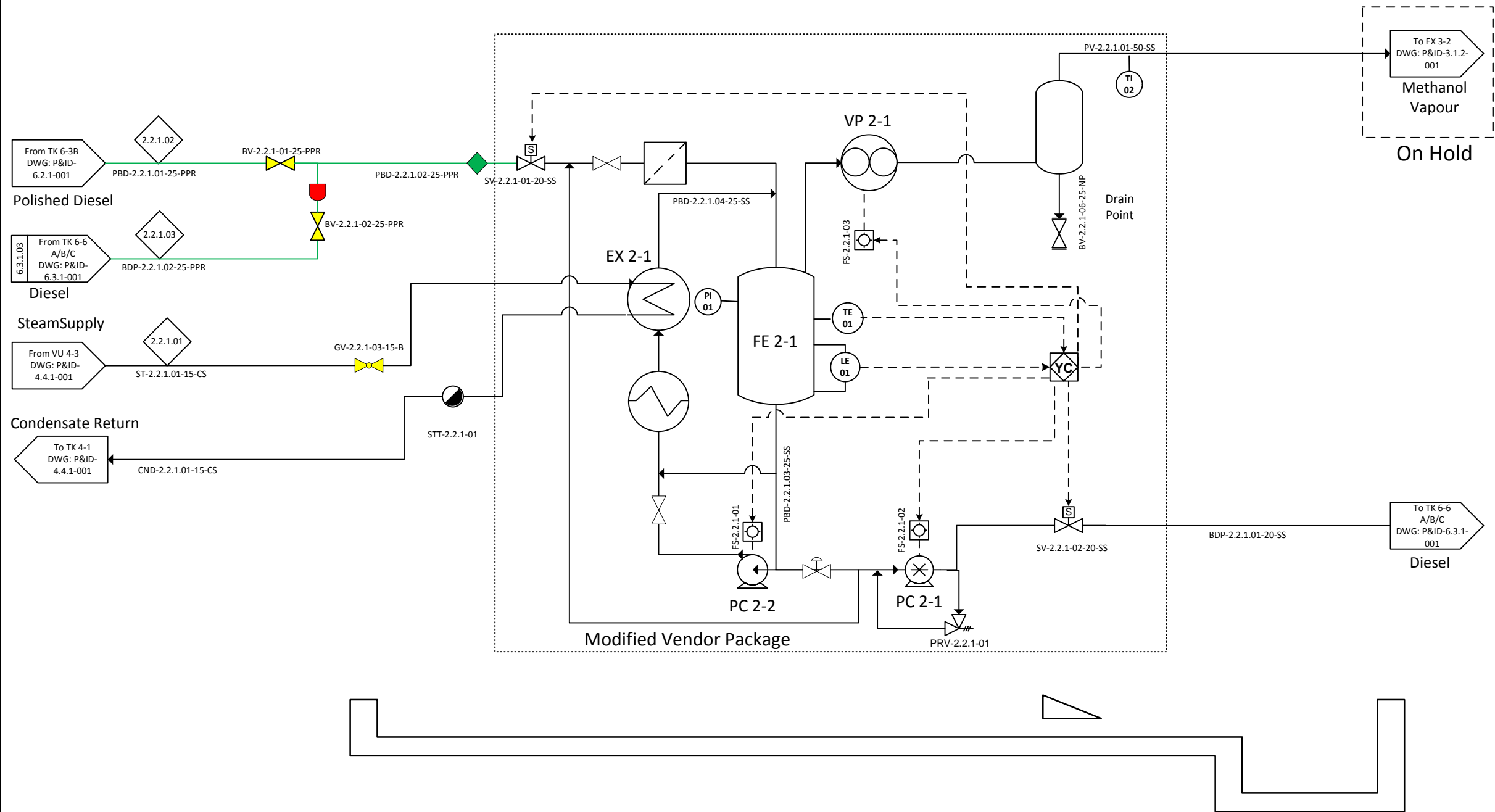
NORTH-WEST UNIVERSITY  
YUNIBESITI YA BOKONE-BOPHIRIMA  
NOORDWES-UNIVERSITEIT

WP 2.1-Polishing, Ionic Resin Absorption

DRAWN BY: PDA	DATE: 2015/11/24	SCALE: NTS	SIZE: A3
DWG NO: iLive-P&ID-2.1.1-001	SHEET: 001	REV: 0G	



FE 2-1		EX 2-1		PC 2-1		PC 2-2		VP 2-1	
Dimensions		Dimensions		Dimensions		Dimensions		Dimensions	
Duty	0	Duty	30 kW	Duty	2	Duty	2 kW	Duty	
T-T		T-T		T-T		T-T		T-T	
Design / Opp. P	20 / 50 kPa	Design / Opp. P	300 kPa	Design / Opp. P	200 / 200	Design / Opp. P	200 / 200	Design / Opp. P	200 / 200
Design / Opp. T	100 / 50	Design / Opp. T	150 / 100	Design / Opp. T	100 / 60	Design / Opp. T	100 / 60	Design / Opp. T	100 / 60
M.O.C.		M.O.C.	SS	M.O.C.		M.O.C.		M.O.C.	SS



NOTES:  

- 1. H.W.S. = Hot Water Supply
- 2. H.W.R. = Hot Water Return
- 3. C.W.S. = Cold Water Supply
- 4. C.W.R. = Cold Water Return
- 5. Tank TK 2-1 Needs To Be Elevated.
- 6. Elevation of Venturi
- 7. Elevate DM 2-1 to allow flow to MeOH tank

LEGEND

CODE	DESCRIPTION
WCO	Waste Cooking Oil
ECO	Esterified Cooking Oil
RBD	Raw Biodiesel
PBD	Polished Biodiesel
BDP	Biodiesel Product
MHO	Methanol
CAT	Methanol Catalyst
ADD	Biodiesel Additives
PF	Process Fluid (Mixture)
EF1	Effluent 1
EF2	Effluent 2
RG	Raw Glycerol
CW	Cold Water
ST	Steam
CND	Steam Condensate
UW	Utility Water
PV	Process Vapour
CA	Compressed Air

REV	DATE	REVISION DESCRIPTION	APP
04	2016/06/29	Mid-Construction	-
03	2016/02/16	Pre-Construction	-
02	2015/12/14	Post-HAZOP	-
01	2015/12/09	Pre-HAZOP	-
00	2015/11/25	First Draft	-

CLIENT:  
  
  
NORTH-WEST UNIVERSITY  
YUNIBESITI YA BOKONE-BOPHIRIMA  
NOORDWES-UNIVERSITEIT

WP 2.2.1-Diesel Drying

DRAWN BY: PDA	DATE: 2015/11/25	SCALE: NTS	SIZE: A3
DWG NO: iLive-P&ID-2.2.1-001		SHEET: 001	REV: 0G